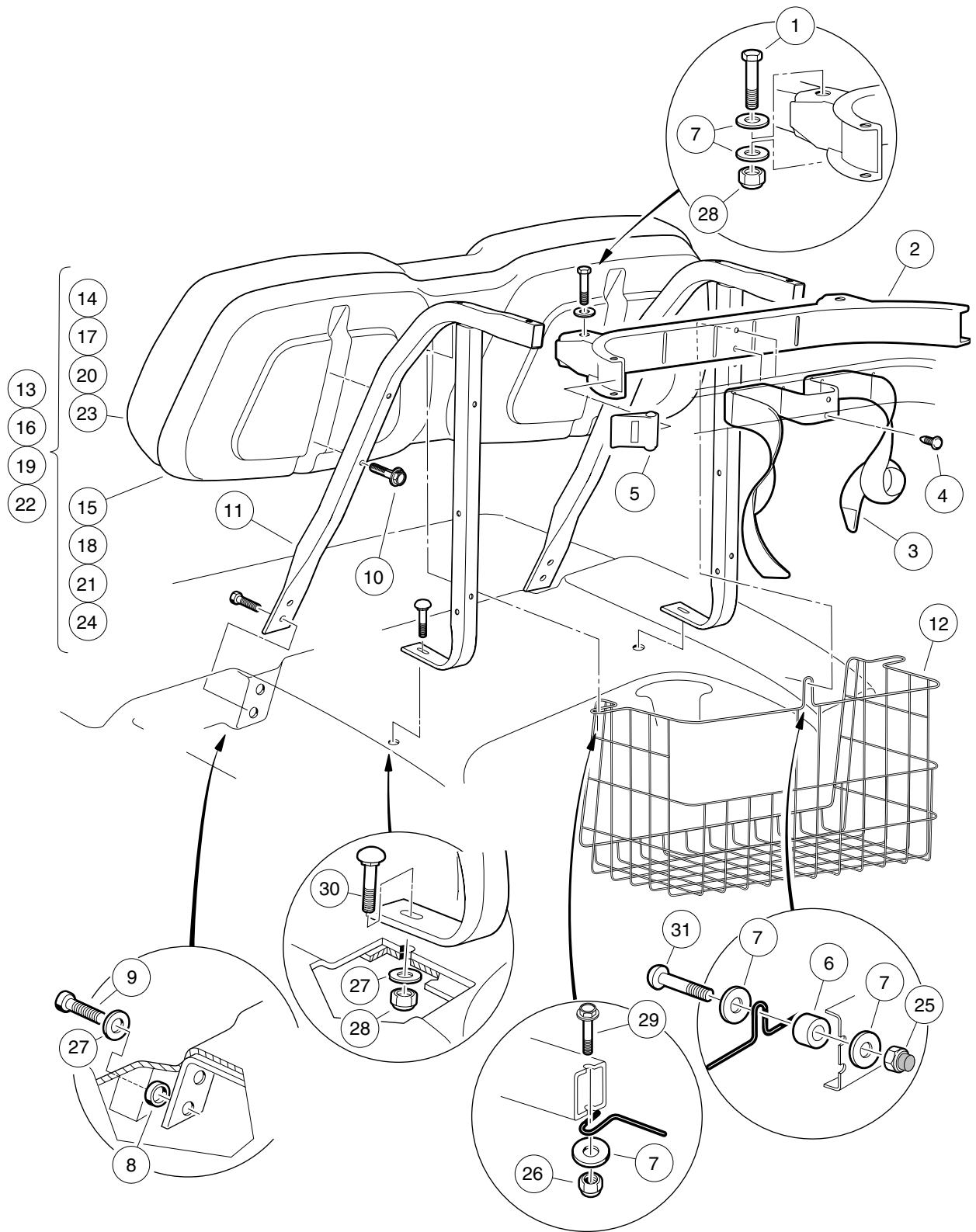


**1**  
**G**  
**E**



000453-001

# SEAT BACK AND BAG HOOP

ITEM	PART NO.	DESCRIPTION	QTY
		1 2 3 4	
1	1010921	Screw, 5/16-18 X 2.50 Hex Cap .....	2
2	1013935	Bag Hoop W/buckle & Strap Asm (includes items 3 through 6) .....	1
3	1010413	Bag Strap Assembly .....	1
4	1010434	Barrel - Plastic .....	2
5	1013656	Molded Bag Hoop .....	1
6	1013754	Buckle, Bag Strap .....	2
7	1014482	Spacer, Nylon .....	1
8	1015075	Washer, 5/16 Flat Type A .....	8
9	1017774	Body Spacer .....	4
10	101910401	Screw, 5/16-18 X 1.25 Thrd Frm .....	4
11	102076701	Screw, 1/4-20 X 1.75 Hex Sems .....	4
12	102236601	Support Weldment .....	2
13	102236703	Sweater Basket, Black .....	1
14	102238301	Kit, Seat Back, Buff (includes items 15 and 16) .....	1
15	102060511	Skin Seat Back, Beige .....	1
16	102237001	Cap - Seat Back .....	1
17	102238302	Kit, Seat Back, White (includes items 18 and 19) .....	1
18	102060512	Skin Seat Back, White .....	1
19	102237001	Cap - Seat Back .....	1
20	102238304	Kit, Seat Back, Black (includes items 21 and 22) .....	1
21	102060514	Skin Seat Back, Black .....	1
22	102237001	Cap - Seat Back .....	1
23	102238305	Kit, Seat Back, Gray (includes items 24 and 25) .....	1
24	102060515	Skin Seat Back, Gray .....	1
25	102237001	Cap - Seat Back .....	1
26	102242401	Nut - Nylon Insert W/cap .....	1
27	1028	Nut, 1/4-20 Hex .....	2
28	1241	Washer, 5/16 Type A Flat .....	6
29	7473	Locknut, 5/16-18 Nylon Insert .....	4
30	7479	Screw, 1/4-20 X 1.25 Hex-Head Cap .....	2
31	7818	Bolt, Carriage, 5/16-18 X 1.5 .....	2
32	8418	Screw, 1/4-20 X 1.50 Phillips Truss-Head .....	1

**1**  
**G**  
**E**